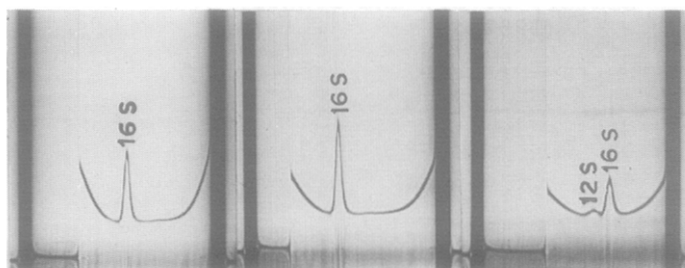


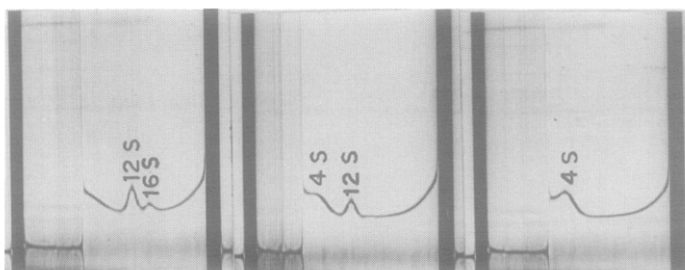
## Erratum

Vol. 32, No. 2 (1968), in the communication, "Citrate Lyase: Molecular Weight and Subunit Structure," by S. P. Mahadik and C. SivaRaman, pp. 167-172:

Page 171, Figure 1 was not printed. The figure and legend appear below:



Reagent	DTNB	PCMB	PCMB
SH groups reacted per mole enzyme	8	8	16
Activity (% initial)	80	90	43



Reagent	PCMB	PCMB	PCMB
SH groups reacted per mole enzyme	26	34	68
Activity (% initial)	6	0	0

**Figure 1. Effect of -SH reagents on citrate lyase**

Buffer systems: 0.25 M Tris -HCl, pH 8.0, for DTNB; 0.05 M  $\text{KH}_2\text{PO}_4$  -  $\text{K}_2\text{HPO}_4$ , pH 7.4, for PCMB. Protein, 2.7 - 5.5 mg/ml. Speed, 59,780 rpm; temp. 3 - 7°; photographs taken at 32 min.